

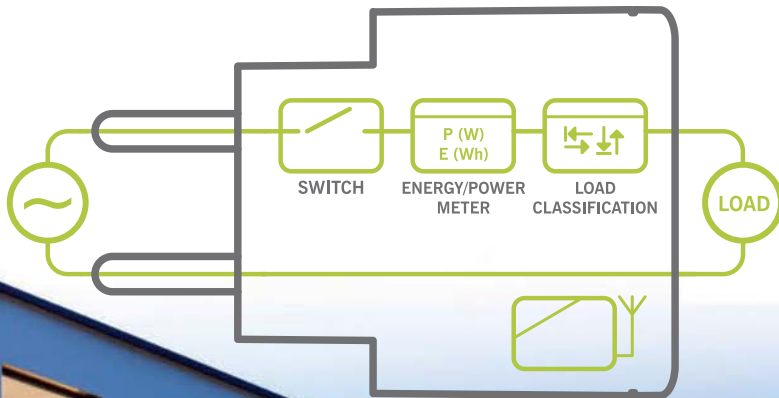
The Smart Plug incorporates a wireless relay switch, a range extender and an energy and power meter in a single device. It fits in a standard power outlet and communicates via wireless RF. The Smart Plug has the capability to handle heavy loads (up to 16 A) and has built-in protections.



PSC234



PSC234NF

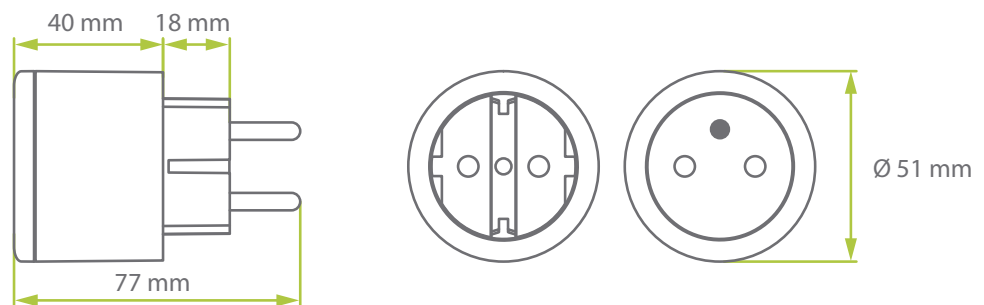


Specifications

Plug and socket type	IEC type F "Schuko" (PSC234) IEC type E "NF" (PSC234NF)
Maximum load power	2500 W / 11A (version G3), 3680 W / 16A (version G4)
Electrical	230V, 50 Hz
Power dissipation standby	< 0.5 W
Protection	over-temperature, average-overload, child-safety
Measurement	power [W], energy [Wh] stored at powerfail
Wireless communication	EnOcean-Dolphin (Repeating level 1 and level 2 configurable) Z-Wave+ (Repeating supported)
Firmwareupdate	supported



Dimensions

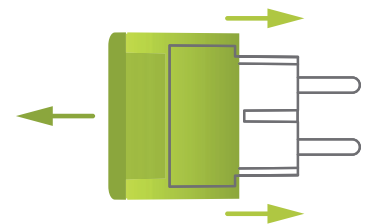


Functionality

- wireless switching of electrical loads up to 16 A
- measurement of
 - energy consumption ([Wh], stored at powerfail)
 - real power ([W], interval 1 s)

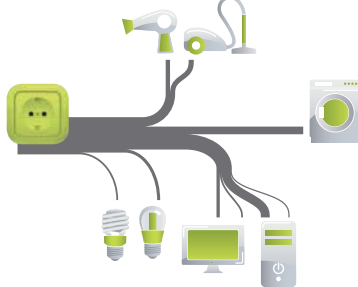
Custom look

The outer ring of the Smart Plug is replaceable. By choosing a ring of different color or shape the appearance can be customized.



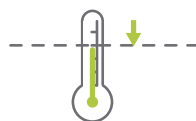
Energy measurement

per load category (optional)



Protection and reliability

Automatic shut-off at over-temperature



Automatic shut-off at average overload



Near-to-zero voltage switching of relay

